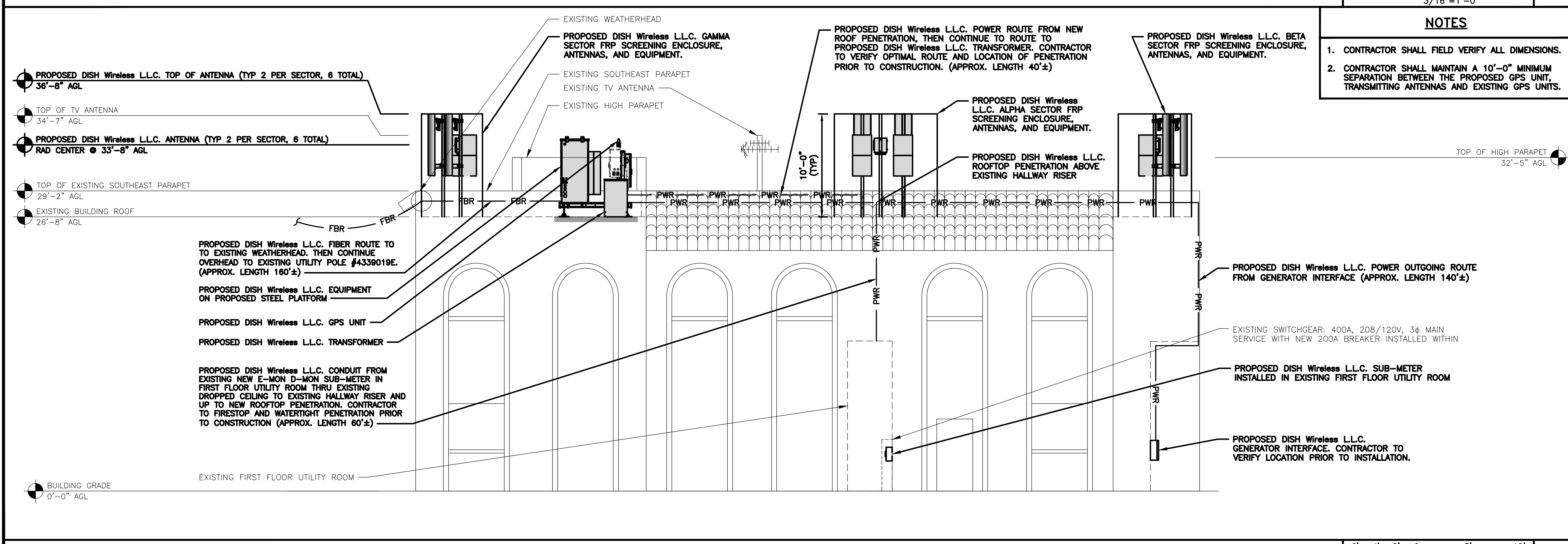
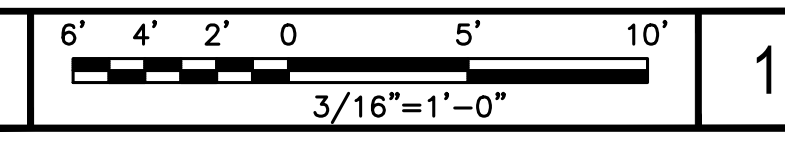


- NOTES**
1. CONTRACTOR SHALL FIELD VERIFY ALL DIMENSIONS.
 2. CONTRACTOR SHALL MAINTAIN A 10'-0" MINIMUM SEPARATION BETWEEN THE PROPOSED GPS UNIT, TRANSMITTING ANTENNAS AND EXISTING GPS UNITS.

5701 SOUTH SANTA FE DRIVE
LITTLETON, CO 80120

3659 GREEN ROAD, SUITE 214
CLEVELAND, OH 44122

BUILDING NORTHWEST ELEVATION



- NOTES**
1. CONTRACTOR SHALL FIELD VERIFY ALL DIMENSIONS.
 2. CONTRACTOR SHALL MAINTAIN A 10'-0" MINIMUM SEPARATION BETWEEN THE PROPOSED GPS UNIT, TRANSMITTING ANTENNAS AND EXISTING GPS UNITS.

IT IS A VIOLATION OF LAW FOR ANY PERSON, UNLESS THEY ARE ACTING UNDER THE DIRECTION OF A LICENSED PROFESSIONAL ENGINEER, TO ALTER THIS DOCUMENT.

DRAWN BY:	CHECKED BY:	APPROVED BY:
GCA	AMR	AB
RFDS REV #:	0	

ZONING DOCUMENTS

SUBMITTALS

REV	DATE	DESCRIPTION
A	02/01/2022	ISSUED FOR REVIEW
0	02/15/2022	FINAL ZONING DRAWINGS
1	10/21/2022	DESIGN UPDATE

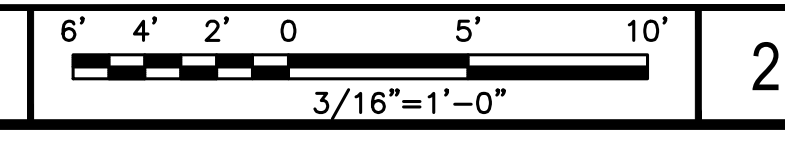
A&E PROJECT NUMBER
LALAX04123B

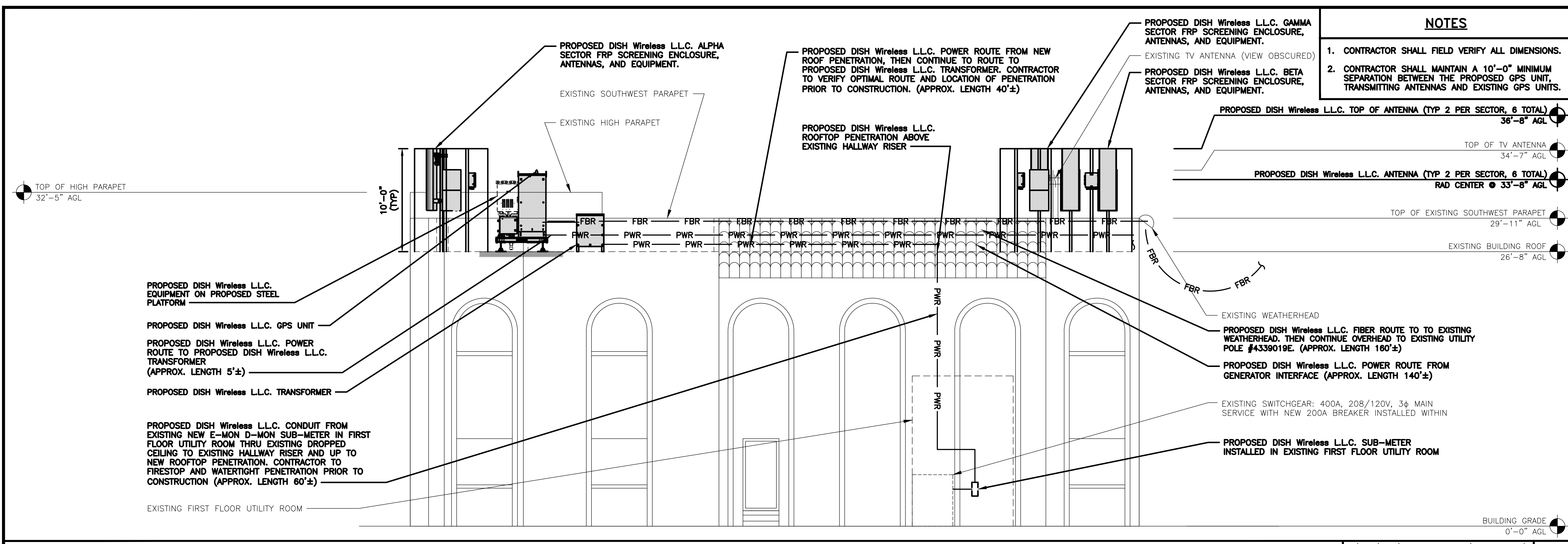
DISH Wireless L.L.C.
PROJECT INFORMATION
LALAX04123B
12610 GLENOAKS BLVD
SYLMAR, CA 91342

SHEET TITLE
NORTHWEST AND SOUTHEAST ELEVATIONS

SHEET NUMBER
A-4

BUILDING SOUTHEAST ELEVATION



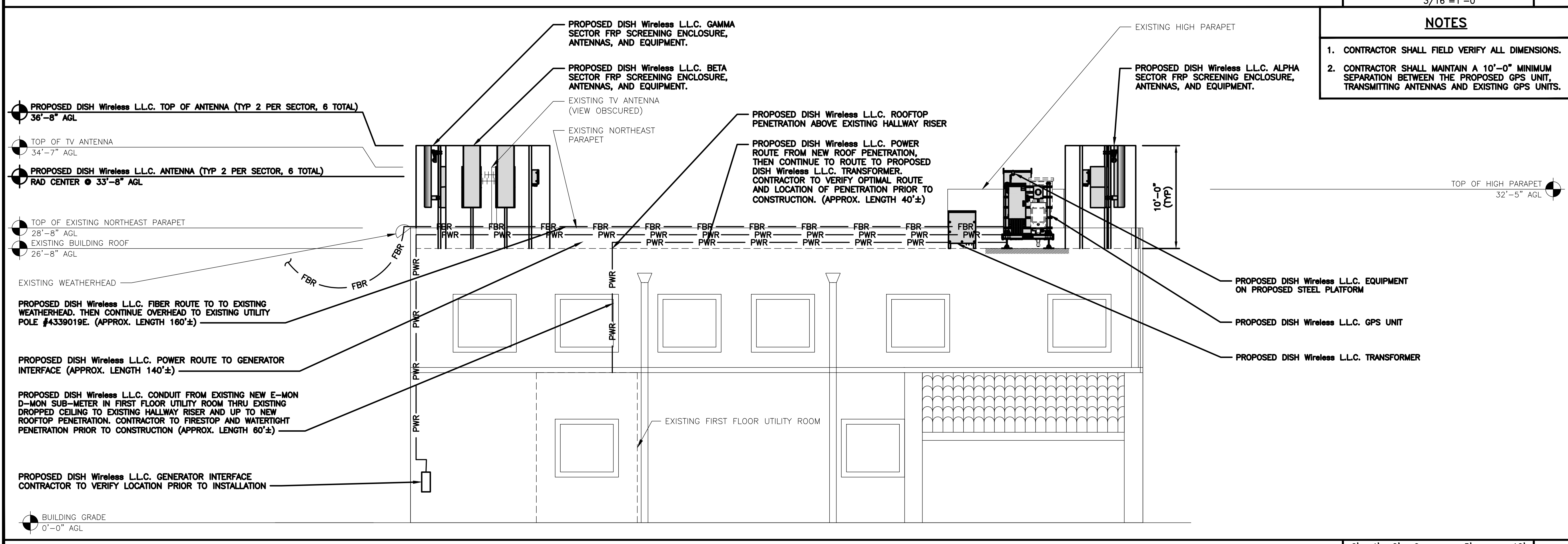
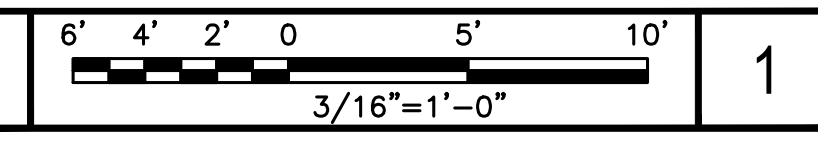


- NOTES**
1. CONTRACTOR SHALL FIELD VERIFY ALL DIMENSIONS.
 2. CONTRACTOR SHALL MAINTAIN A 10'-0" MINIMUM SEPARATION BETWEEN THE PROPOSED GPS UNIT, TRANSMITTING ANTENNAS AND EXISTING GPS UNITS.

5701 SOUTH SANTA FE DRIVE
LITTLETON, CO 80120

3659 GREEN ROAD, SUITE 214
CLEVELAND, OH 44122

BUILDING SOUTHWEST ELEVATION



- NOTES**
1. CONTRACTOR SHALL FIELD VERIFY ALL DIMENSIONS.
 2. CONTRACTOR SHALL MAINTAIN A 10'-0" MINIMUM SEPARATION BETWEEN THE PROPOSED GPS UNIT, TRANSMITTING ANTENNAS AND EXISTING GPS UNITS.

IT IS A VIOLATION OF LAW FOR ANY PERSON, UNLESS THEY ARE ACTING UNDER THE DIRECTION OF A LICENSED PROFESSIONAL ENGINEER, TO ALTER THIS DOCUMENT.

DRAWN BY:	CHECKED BY:	APPROVED BY:
GCA	AMR	AB
RFDS REV #:	0	

ZONING DOCUMENTS

SUBMITTALS		
REV	DATE	DESCRIPTION
A	02/01/2022	ISSUED FOR REVIEW
0	02/15/2022	FINAL ZONING DRAWINGS
1	10/21/2022	DESIGN UPDATE

A&E PROJECT NUMBER
LALAX04123B

DISH Wireless L.L.C.
PROJECT INFORMATION
LALAX04123B
12610 GLENOAKS BLVD
SYLMAR, CA 91342

SHEET TITLE
SOUTHWEST AND
NORTHEAST ELEVATIONS

SHEET NUMBER
A-5

BUILDING NORTHEAST ELEVATION

